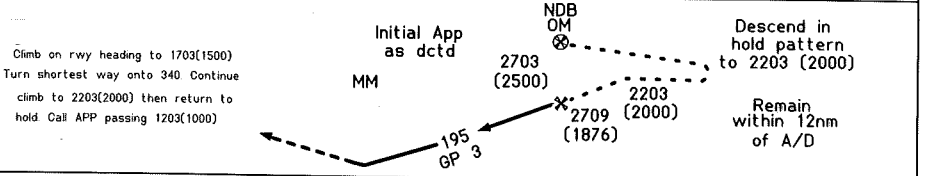
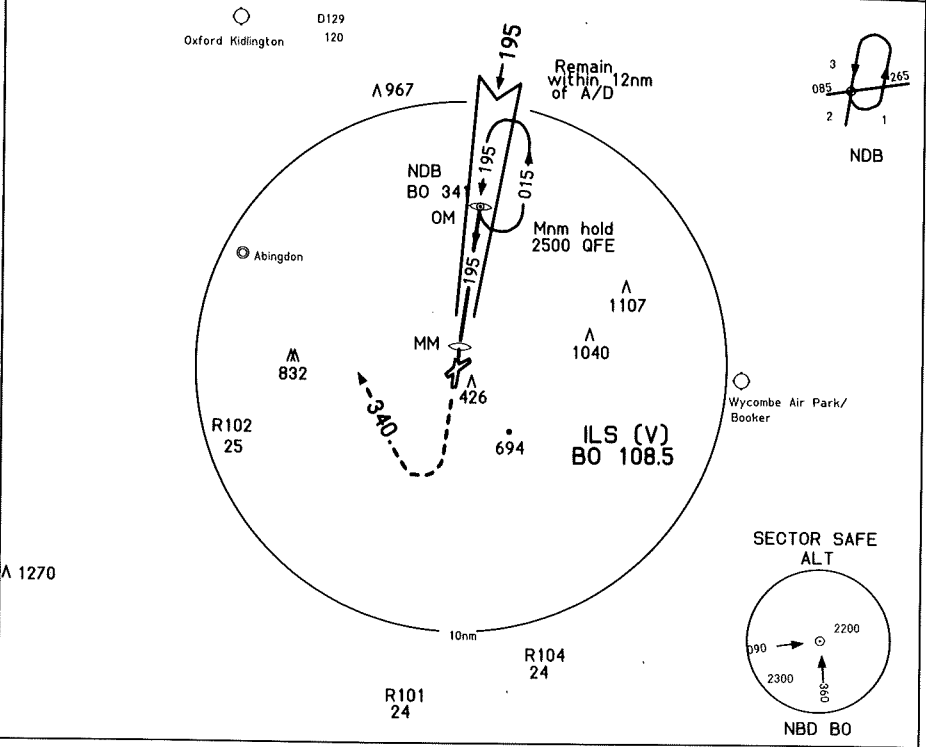


BENSON APP 347.1 120.9	BENSON TWR 337.8	RDR (SRE) 254.2
----------------------------------	----------------------------	---------------------------

EMERGENCY SAFE ALTITUDE 100nm 5000ft	TA 3000ft	Var 6W
--------------------------------------	-----------	--------



TDZE 203ft ← 5.3nm →

1. CAC-LONDON MIL or BRIZE RDR
2. VASIS Type 1 installation
3. CAUTION Lczz only app. Maintain 2203 (2000) to OM
4. Circling to West of A/D only

GND SPEED		Knots	90	120	150	180	210	
OM-MM		5.3nm	minsec	3.32	2.39	2.07	1.46	1.31
CAT	A	B	C	D	E			
S-ILS-19	403/8 200 (200/8)							
S-LOC-19	623/8 420 (500/8)		623/12 420(500/12)		623/1.6 420(500/1.6)			
CIRCL	747/1.6 540(600 1.6)		747/2.4 540(600 2.4)		1047/4.8 840(900 4.8)		1207/4.8 1000(1000 4.8)	